



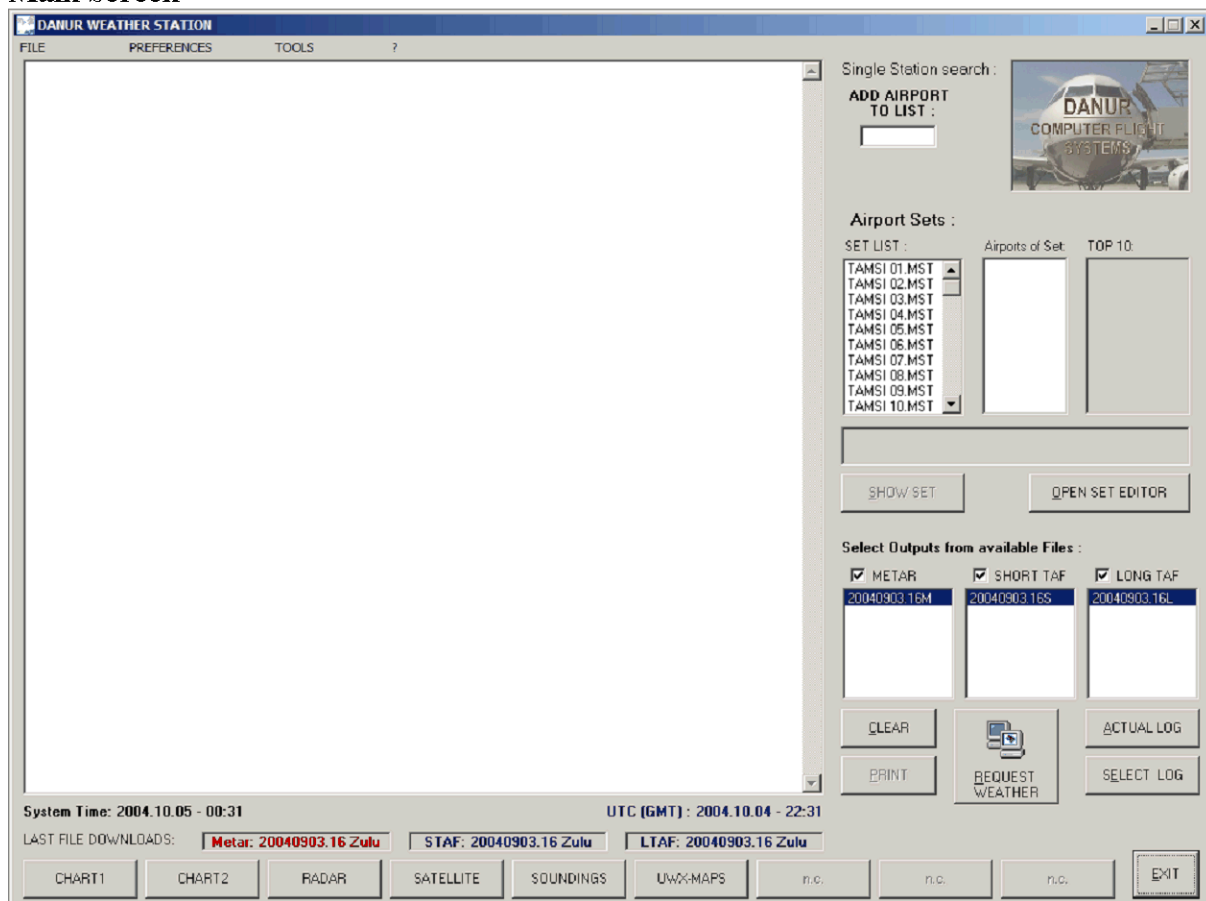
DANUR WEATHER CENTER

Urs Wildermuth and Heinz Oetiker

Manual Version 1.2

DANUR WEATHER CENTER 1.0 includes a weather-browser, which extracts data from the Flight Operation Center weather server as well as from different web resources to a simple and easy to use interface, which allows easy access to and printing of this data

Main Screen



The main screen hosts most actions within Weather Center. It is pictured above and consists of the following elements:

1. Display window shows the selected messages.

LAST METAR DOWNLOAD: 13.12.2003 - 19 Zulu
--
2. Status window shows the time of the last synchronisation in UTC. Actual data are shown in green, indicating there is no need to synchronize. Outdated data are shown in red, necessitating a new download.

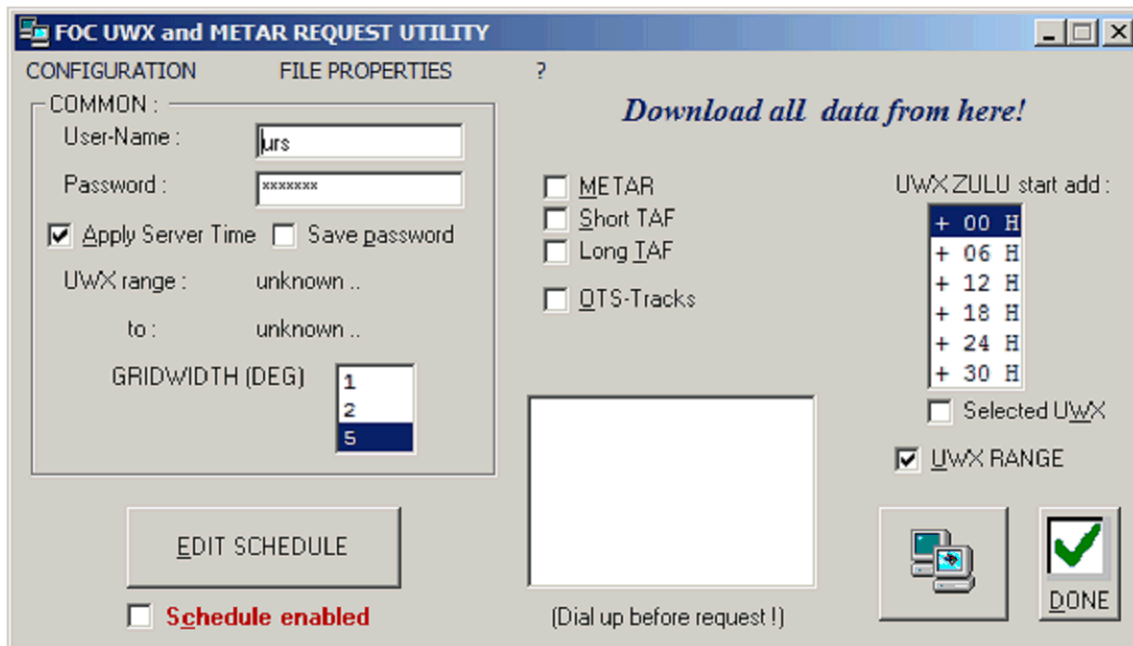
3. Time in UTC

This indicates the system time as well as the actual time in UTC. If there is a difference to the actual time, change the settings in Windows.



4. Request Data Button

This button starts the download tool, which transfer data from the server to the application. If you press this window, the following window appears:



4.1 Request Utility

In order to call up data using this tool, enter username and password, (if not already done) in the respective fields. Then check the elements you wish to download.


METAR: Loads all available METAR data.

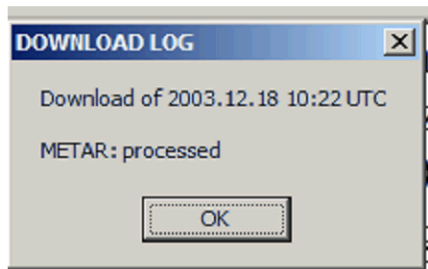
Short TAF: Loads all available Short Time TAF Data.

Long TAF: Loads all available Long Time TAF Data.

Normally these are all the data you need to download. If you have installed Weather Station within FOC, you may download UWX Range and Nat Tracks as well. Otherwise this is neither necessary nor desirable as it takes disk space and time. On most installations where FOC is not present, these options are greyed out.

The option „Update NAV Data“ is not enabled in this software, do not try to use it.

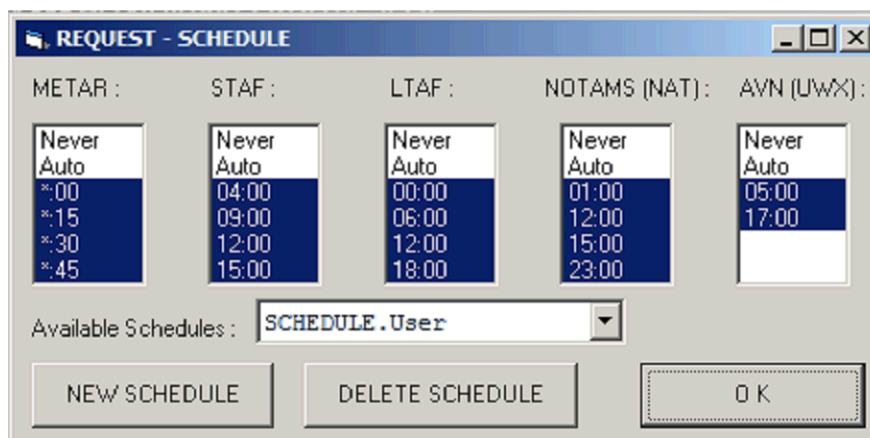
Now mark the necessary elements and click onto the send button. . Data download begins. Once the download is finished, a report is printed. :



After this, the utility may be closed using the „Done” button.

Automatic Download:

In order to set up a schedule for automatic download, open the Schedule Option within the Request Utility. Click the button Schedule from within the Request Utility and the following window appears:



You may define either manually or automatically which data issues are to be downloaded automatically. Click onto the various data issue times. If you want to use the preset automatic schedule, select AUTO in the respective column. This is recommended if you have a constantly open Internet connection. Depending on your license, some option may be grayed out, as the automatic schedules for FOC and Weather Station are the same. If you only own Weather Station without FOC, then the AVN option is grayed out or, if not, you should select NEVER in order to avoid useless downloads. If you operate FOC and Weather Station, one schedule will also select the schedule of the other as they both work from the same directory and share the used data.

You may define further schedules for your personal convenience, by pressing the NEW SCHEDULE button. This can be useful if you use Weather Station from different sites on your laptop. If you only have modem connection while you are on vacation, you may decide that you wish only to download less data than when you have a high speed connection available.

Once the schedule is set, press OK and then activate the schedule option in the request tool so it turns green. Now you can either minimize the Request Utility or leave it open, as you wish, but don't close it, otherwise it will cease functioning. Of course you need an open internet connection for the download to work.

If you close the Request Utility by pressing DONE, the utility will delete unnecessary data. We recommend to close the utility once a week at least to get rid of unnecessary overhead.

Airport Sets :

SET LIST : Airports of Set: TOP 10:

TAMSI 01.MST		
TAMSI 02.MST		
TAMSI 03.MST		
TAMSI 04.MST		
TAMSI 05.MST		
TAMSI 06.MST		
TAMSI 07.MST		
TAMSI 08.MST		
TAMSI 09.MST		
TAMSI 10.MST		

SHOW SET OPEN SET EDITOR

Select Outputs from available Files :

<input checked="" type="checkbox"/> METAR	<input checked="" type="checkbox"/> SHORT TAF	<input checked="" type="checkbox"/> LONG TAF
20040903.16M	20040903.16S	20040903.16L

CLEAR REQUEST WEATHER ACTUAL LOG

PRINT SELECT LOG

5. Data retrieval:

There are two possibilities to call up data: .

1. Call up lists: : Klick Sie on one of the displayed lists in the „Airport Sets“ window. A short description of the list appears below the window and the included airports are displayed in the „Airport List of Set“ window.
2. Single Station: Enter the desired station in the „ADD AIRPORT TO LIST“ window and press the ENTER key. The airport is displayed in the display window. Repeat for multiple airports.
3. Now select the messages to be printed by clicking the center options checkboxes.
4. Display the messages using the „Show Set“ button.
5. To clear the display window, click on the „CLEAR“ button
6. TO print the shown messages, click onto the print button.

Retrieval of charts and websites.

CHART1	CHART2	RADAR	SATELLITE	SOUNDINGS	UWX-MAPS
--------	--------	-------	-----------	-----------	----------

The buttons above may be programmed to display websites. Default websites are

Wind Chart 1 ad 2: NOAA, Charts must be printed using a TIFF compatible program.

Radar: NZZ

Satellite: Karlsruhe

Soundings: University of Wyoming.

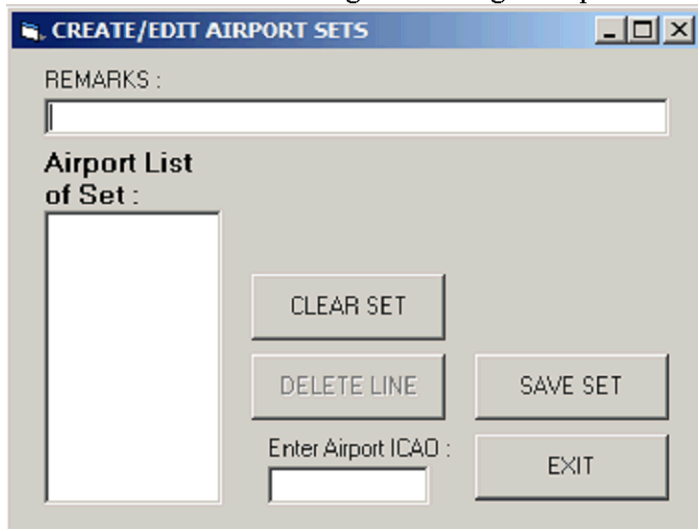
UWX Maps: South African Weather Service.

These are only sample links, you can program your own by using the Configuration tool.

Administrative Tools

List editor

The list editor allows editing and adding of airport lists.



The editor consists of 4 elements:

1. Airport entry window
Enter the desired airport 4 letter code and press the Enter Key. The entered airports appear in the list to the left.
2. Airport List of Set
Lists the entered airports To delete an airport click on it and press the „DELETE LINE“ button. To clear the list press on „CLEAR SET“.
3. Remarks
This is where you may type the descriptions and remarks that are later shown in the main window when you click on the list.
4. Kommandoknöpfe
SAVE SET: Save a set.
CLEAR SET: Clears the whole set of airports.
DELETE LINE: Clears the marked airport from the list.
EXIT: Clears the window.

Link Editor

The Link Editor changes the programming of the buttons

